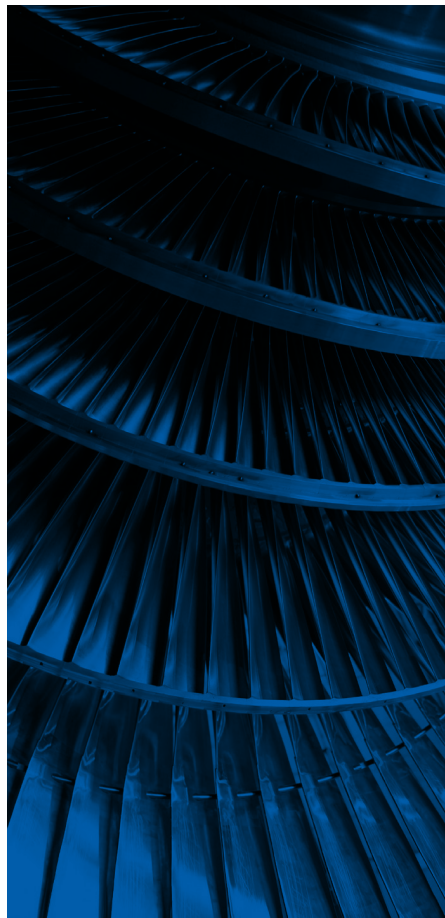
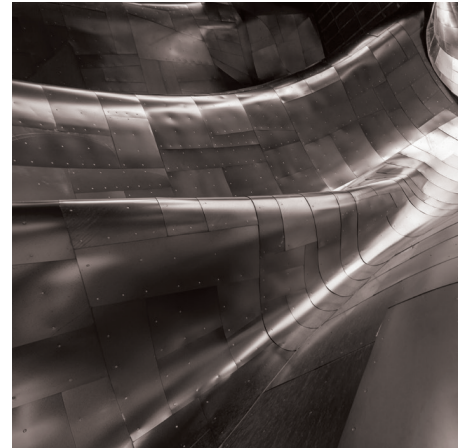




Garryson®



ABRASIVES

PRODUCT CATALOGUE

METRIC

INTRODUCTION



INTRODUCTION

With over 50 years experience, ATA is a global leader in the provision of high-end products. Our comprehensive portfolio offers a solution for every grinding and finishing application, optimising processes in terms of economic efficiency, reliability and safety. Our customers come from a wide variety of industries, including automotive, aerospace, foundries, metal fabrication, oil & gas, marine, medical, rail and power & energy.

INNOVATION

Continuous investment in customer and application driven product development, providing the most effective solutions

PEOPLE AND EXPERTISE

An experienced and skilled team of abrasive engineers, technical support and customer support teams, ensuring the best service

TOOL AND CONSUMABLE COMBINATIONS

Products can be combined with a comprehensive range of ATA Air Tools, ensuring maximum performance output



ATA Tools Ltd.,
IDA Business & Technology Park,
Killygarry, Cavan, Co. Cavan,
H12 DK46, Ireland

T: +353 (0) 49 432 6178
E: sales@atagroup.ie
W: www.atagroup.co

ATA Garryson Ltd.,
Spring Road, Ibstock,
Leicestershire, LE67 6LR,
United Kingdom

T: +44 (0) 1530 261 145
E: sales@atagarryson.com
W: www.atagroup.co

ATA Tools, Inc.
7 Ascot Parkway, Cuyahoga
Falls, Ohio 44223,
USA

T: +1 330 928 7744
E: sales@atatools.com
W: www.atagroup.co

Garryson®

Ordering Information

International T: +353 (0) 49 432 6178 **E:** sales@atagroup.ie
UK T: +44 (0) 1530 261 145 **E:** sales@atagarryson.com
US T: +1 330 928 7744 **E:** sales@atatools.com

ICON LIBRARY

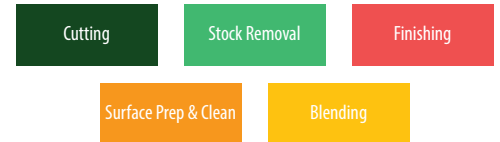
SPECIFICATIONS & FEATURES

Abrasive	
Bonding	
Bore Diameter Ø	
Colour	
Density	
Depth	
Diameter Ø	
Disc Holders	
Grain	
Hardness	
Holders	
Length	
Mandrel Part No.	
Max RPM	
Pack QTY	
Series	
Shank Diameter Ø	
Shape	
Spindle	
Structure	
Width	

SAFETY ICONS



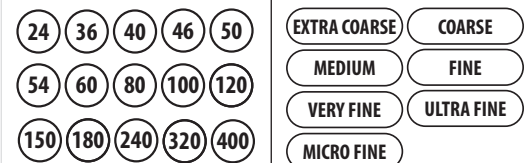
APPLICATIONS



PRODUCT DISCOUNT GROUP



GRIT SIZE & GRADE



BACKING PLATES

(Glass Fibre / Angled)
Type 29

(Glass Fibre / Flat)
Type 27

(Aluminium / Angled)
Type 29

(Glass Fibre / Angled)
Type 29

(Glass Fibre - Flexi)

Ordering Information

International **T:** +353 (0) 49 432 6178 **E:** sales@atagroup.ie

UK **T:** +44 (0) 1530 261 145 **E:** sales@atagarryson.com

US **T:** +1 330 928 7744 **E:** sales@atatools.com

(See price list for full list of part codes)

FLAP WHEELS

Aluminium Oxide Flap Wheels | CERAMIQ™ Flap Wheels |

Aluminium Oxide Miniature Flap Wheels



FLAP WHEELS - ALUMINIUM OXIDE FLAP WHEELS



40 60 80 100 120 180 = Grit Size

1

Finishing

Surface Prep & Clean

Blending

Flap Wheels



Aluminium Oxide Flap Wheels

- Flap wheels are ideal for use on a wide range of materials for stock removal, deburring, cleaning, blending and finishing
- Typical applications include cleaning weld surfaces, removing die lines, paint or rust removal and sanding
- Grits 150, 240 and 320 available upon request



Part No:		Diameter Ø	Depth	Shank Diameter Ø	Max RPM	Pack Qty
GS3010	40 60 80 100 120 180	30mm	10mm	3mm	25,000	10
GS3015	40 60 80 100 120 180	30mm	15mm	3mm	25,000	10
GS3010L	40 60 80 100 120 180	30mm	10mm	6mm	25,000	10
GS3015L	40 60 80 100 120 180	30mm	15mm	6mm	25,000	10
GS4010	40 60 80 100 120 180	40mm	10mm	6mm	19,000	10
GS4015	40 60 80 100 120 180	40mm	15mm	6mm	19,000	10
GS4020	40 60 80 100 120 180	40mm	20mm	6mm	19,000	10
GS4025	40 60 80 100 120 180	40mm	25mm	6mm	19,000	10
GS4030	40 60 80 100 120 180	40mm	30mm	6mm	19,000	10
GS5010	40 60 80 100 120 180	50mm	10mm	6mm	15,000	10
GS5015	40 60 80 100 120 180	50mm	15mm	6mm	15,000	10
GS5020	40 60 80 100 120 180	50mm	20mm	6mm	15,000	10
GS5025	40 60 80 100 120 180	50mm	25mm	6mm	15,000	10
GS5030	40 60 80 100 120 180	50mm	30mm	6mm	15,000	10
GS5040	40 60 80 100 120 180	50mm	40mm	6mm	15,000	10
GS6010	40 60 80 100 120 180	60mm	10mm	6mm	12,600	10
GS6015	40 60 80 100 120 180	60mm	15mm	6mm	12,600	10
GS6020	40 60 80 100 120 180	60mm	20mm	6mm	12,600	10
GS6025	40 60 80 100 120 180	60mm	25mm	6mm	12,600	10
GS6030	40 60 80 100 120 180	60mm	30mm	6mm	12,600	10
GS6040	40 60 80 100 120 180	60mm	40mm	6mm	12,600	10
GS6050	40 60 80 100 120 180	60mm	50mm	6mm	12,600	6
GS8015	40 60 80 100 120 180	80mm	15mm	6mm	9,500	10
GS8020	40 60 80 100 120 180	80mm	20mm	6mm	9,500	10
GS8025	40 60 80 100 120 180	80mm	25mm	6mm	9,500	10
GS8030	40 60 80 100 120 180	80mm	30mm	6mm	9,500	10
GS8040	40 60 80 100 120 180	80mm	40mm	6mm	9,500	10
GS8050	40 60 80 100 120 180	80mm	50mm	6mm	9,500	6

Ordering Information

International T: +353 (0) 49 432 6178 E: sales@atagroup.ie

UK T: +44 (0) 1530 261 145 E: sales@atagarryson.com

US T: +1 330 928 7744 E: sales@atatools.com

(See price list for full list of part codes)

Garryson®

FLAP WHEELS - CERAMIQ™ FLAP WHEELS



40 60 80 = Grit Size

3

Finishing

Surface Prep & Clean

Blending

Flap Wheels



CERAMIQ™ Flap Wheels

- Flap wheels are ideal for use on a wide range of materials for stock removal, deburring, cleaning, blending and finishing
- Typical applications include cleaning weld surfaces, removing die lines, paint or rust removal and sanding
- CERAMIQ™ flap wheels are suitable for aggressive grinding and maximum stock removal



Part No:		Diameter Ø	Depth	Shank Diameter Ø	Max RPM	Pack Qty
GSCIQ3015L	40 60 80	30mm	15mm	6mm	25,000	10
GSCIQ4020	40 60 80	40mm	20mm	6mm	19,000	10
GSCIQ5015	40 60 80	50mm	15mm	6mm	15,000	10
GSCIQ5030	40 60 80	50mm	30mm	6mm	15,000	10
GSCIQ6030	40 60 80	60mm	30mm	6mm	12,600	10

FLAP WHEELS - ALUMINIUM OXIDE FLAP WHEELS



80 120 180 = Grit Size

4

Finishing

Surface Prep & Clean

Blending

Flap Wheels



Aluminium Oxide Miniature Flap Wheels

- Miniature flap wheels are excellent for finishing, grinding and polishing small intricate work pieces



Part No:		Diameter Ø	Depth	Shank Diameter Ø	Max RPM	Pack Qty
GSM1010	80 120 180	10mm	10mm	3mm	40,000	10
GSM1515	80 120 180	15mm	15mm	3mm	40,000	10
GSM2010	80 120 180	20mm	10mm	6mm	30,000	10
GSM2015	80 120 180	20mm	15mm	6mm	30,000	10
GSM2020	80 120 180	20mm	20mm	6mm	30,000	10
GSM2505	80 120 180	25mm	5mm	6mm	30,000	10
GSM2510	80 120 180	25mm	10mm	6mm	30,000	10
GSM2515	80 120 180	25mm	15mm	6mm	30,000	10
GSM2520	80 120 180	25mm	20mm	6mm	30,000	10
GSM2525	80 120 180	25mm	25mm	6mm	30,000	10
GSM3005L	80 120 180	30mm	5mm	6mm	25,000	10
GSM3005	80 120 180	30mm	5mm	3mm	25,000	10

Garryson®

Ordering Information

International T: +353 (0) 49 432 6178 E: sales@atagroup.ie

UK T: +44 (0) 1530 261 145 E: sales@atagarryson.com

US T: +1 330 928 7744 E: sales@atatools.com

(See price list for full list of part codes)

SAFETY INSTRUCTIONS

Abrasive Operations Safety User Information

WARNING:

In normal grinding and finishing operations, material that is being removed from the work piece, such as burs, scale, dirt, weld slag or other residue, will breakaway with considerable force. Also any coated abrasives, will cause cloth and abrasive grain to be released into the atmosphere.

The potential of serious injury exists for both the abrasive operator and others in the direct work area. To protect against this hazard, operators and others in the area **MUST** wear appropriate protective clothing and safety equipment such as **SAFETY GOGGLES** or **FULL FACE SHIELDS**, along with **PROTECTIVE CLOTHING AND RESPIRATORY EQUIPMENT**.

All operators must follow the safety instructions as well as common safety practices to reduce the likelihood or severity of physical injury.

Do not use wet



Wear safety glasses



Wear ear defenders



Wear protective gloves



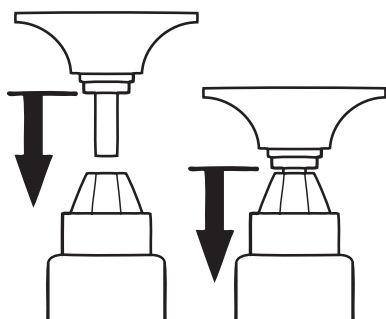
Wear protective mask



Read instructions



- 1. SAFETY GOGGLES:** Approved safety goggles or full face shields **MUST BE WORN**.
- 2. GUARDS:** Always keep all guards in place on any equipment and read operating equipment instructions.
- 3. SPEEDS:** Always observe speed restrictions indicated on the abrasive product, containers, labels or printed material and the machine. **"MAX RPM"** means: Maximum Revolutions Per Minute. **THIS MUST NOT BE EXCEEDED UNDER ANY CIRCUMSTANCE.**
- 4. SHANK:** When using an abrasive product or accessory with a shank, make sure the shank is fitted securely into the machine with no more than 5mm overhang between the chuck or collet.



DO NOT ALLOW UNSAFE CONDITIONS:

Worn bearings, bent spindles, unbalanced machines, unusual application, operator abuse or inappropriate use are considered unsafe conditions and may cause the abrasive product to fail. Specifically with bonded abrasives a hard impact may damage the product. Additionally, bonded abrasives must be used in accordance to their specific use-by date. Do not use, or continue to use, an abrasive product which is functioning improperly (i.e. out-of-balance, etc) as this increases the possibility for the abrasive to fail and cause injury. Any failure or unsafe condition should be evaluated and corrected immediately.

NOTE:

Safety data and instructions are typical and should not be construed as complete for the abrasive product and the equipment being used. Safety procedures may vary and should be specific to the equipment being used, speeds of operations, material being finished, selected abrasives, and other parameters.

International Offices

t: +353 (0) 49 432 6178
f: +353 (0) 49 432 6298

e: sales@atagroup.ie
w: www.atagroup.co

ATA Tools Ltd., IDA Business & Technology Park,
Killygarry, Cavan, Co. Cavan, H12 DK46, Ireland

UK Offices

t: +44 (0) 1530 261 145
f: +44 (0) 1530 262 801

e: sales@atagarryson.com
w: www.atagroup.co

ATA Garryson Ltd., Spring Road, Ibstock,
Leicestershire, LE67 6LR, United Kingdom

US Offices

t: +1 330-928-7744
f: +1 330-849-2977

e: sales@atatools.com
w: www.atagroup.co

ATA Tools Inc., 7 Ascot Parkway,
Cuyahoga Falls, Ohio 44223, USA

